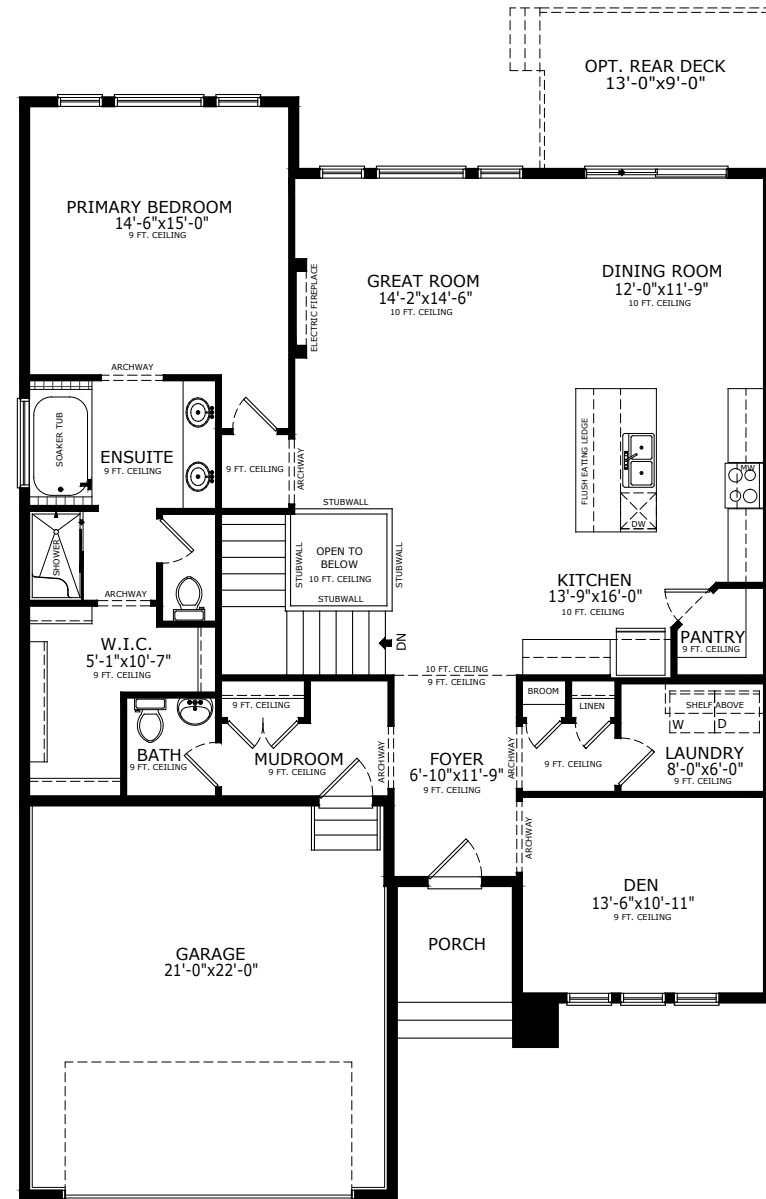


1791 SQ FT  
1 BEDS  
1.5 BATHS

# PARKER



MAIN: 1720 SQ FT

# Sterling HOMES

A QUALICO Company

## ELEVATIONS



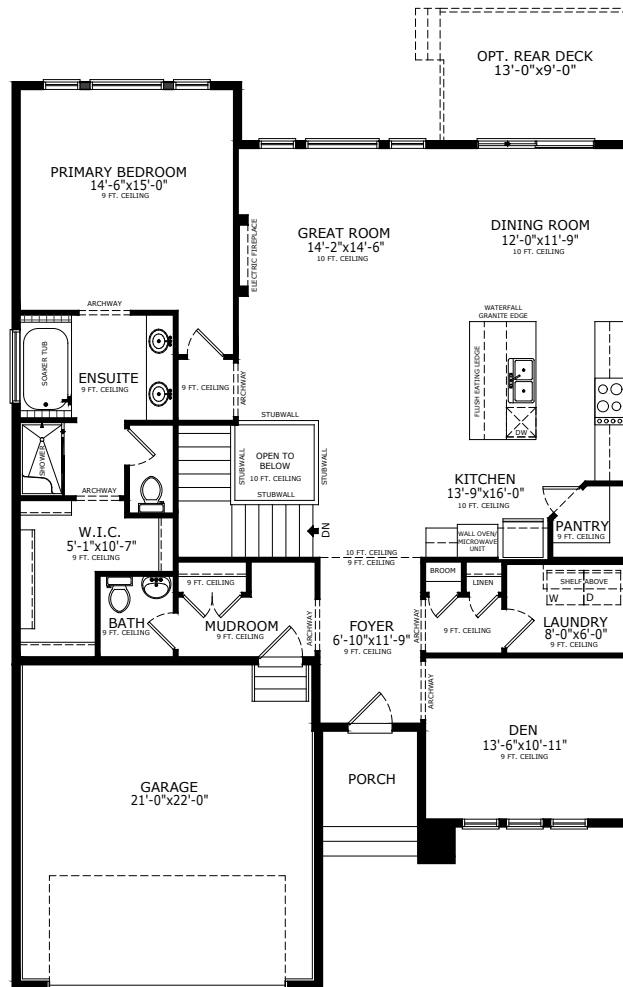
ARTS & CRAFTS



PRAIRIE

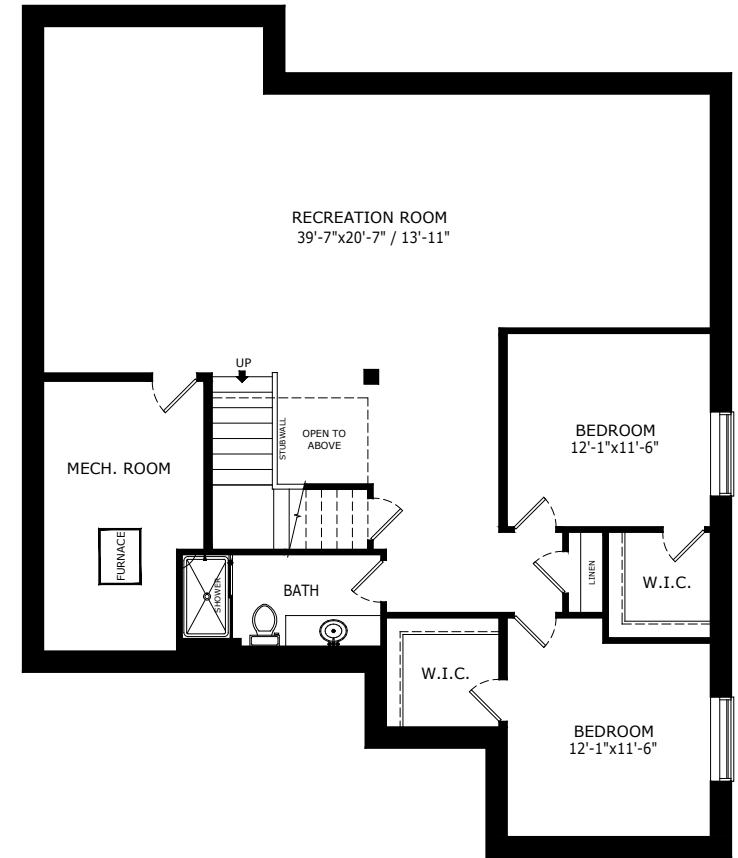
## MAIN FLOOR OPTIONS

### OPTIONAL EXECUTIVE KITCHEN



## BASEMENT OPTIONS

### 1 BEDROOM 'LEGAL SUITE' 848 SQ FT



Scan here  
for floorplan  
options and  
more

\*Legal Suite availability varies by community and municipal regulations.

# Build Your Life

STERLINGCALGARY.COM